



## About us

Pålanalys provides testing, consulting and IT services to the construction industry. With the key words knowledge, availability and quality, we want to meet the need for control, analysis and documentation of the foundation works.

## Specialists with long experience

Pålanalys are specialists in the field of deep foundation, with emphasis on dynamic stress wave measurement. Our experience spans back to the 70's when we were the first to perform PDA testing in Sweden. Since then we have been involved in over 2000 projects in Sweden and internationally. Through participation in the Swedish Pile Commission and other organizations, we are always working to develop the Swedish deep foundation industry.

Pålanalys uses state-of-the-art equipment from the U.S. company Pile Dynamics Inc. Through the subsidiary of Pålanalys, Pile Dynamics Europe, we have been the reseller of this equipment in Northern Europe for almost 20 years. All employees at Pålanalys are certified in accordance with the internationally accepted High Strain Dynamic Pile Test (HSDPT) from Foundation QA



## Why test?

- Does the pile manage to support the intended load?
- Is the pile damaged?
- Is the pile installed with acceptable stresses?
- Is the driving equipment (hammer) sufficient to drive the pile to the intended load?



## Efficient and fast

Since the 70's the load on a standard concrete pile has increased from 600 kN to over 1100 kN. This has been possible through the control of the driving process and verification of the bearing capacity measuring the dynamic stress waves with the Pile Driving Analyzer. Unlike static load tests that are not only expensive, time consuming and limit the number of tested piles, dynamic load tests can be test many piles relatively quickly, at low cost.

Thanks to today's measuring devices that send data in real time over the Internet, the test can be also performed when it suits the production

Does it pay off? Absolutely. By testing approximately 10% of the piles, you can utilize up to 30% more of the piles geotechnical bearing capacity

## Innovative solutions

Using the latest technology, our equipment has been developed to send signals directly from field to servers at the office. This increases productivity for our customers, and provides a faster handling of information to all interested parties. As part of providing information fast, easily and clearly, we have in the past few years developed a database of our projects. With this knowledge base we can easily obtain data concerning measurements and results, through a map or keyword to form the basis for choosing the appropriate method for future projects



## PROPILE



### Simplifying your daily work

Propile is a system that simplifies information management at foundation works, simply speaking it is a digital piling report. The mobile terminals in the field, equipped with bar code scanners and Internet connection, make it easy for the field crew to enter information such as pile number, lengths, casting date, etc.

Data is sent continuously to a server that stores information in a central database. Data can also be sent from server to field. The staff then enters information about the work in advance that will be helpful to the production crew.

All communication with the database is in real time which eliminates the need for complicated and time consuming synchronization of data against the database. In addition, the risk of data loss is minimized. With a simple and fast web interface, the contractor logs in to follow up, edit and print reports and statistics.

The staff can also add users to each project who, depending on their authority, can edit or print reports



## Pile Dynamics Europe

Pile Dynamics Europe is the distributor in Northern Europe for the U.S. company Pile Dynamics Inc (PDI). PDI is not only a manufacturer of measuring equipment, but is the founder of the dynamic measurement methods. PDI is the leading producer of high-quality measuring instruments for the foundation industry. Its product range includes, amongst others, the following hard- and software.



**Pile Dynamics Europe**

Representative in Northern Europe of

**Pile Dynamics, Inc**

### Pile Driving Analyzer (PDA)

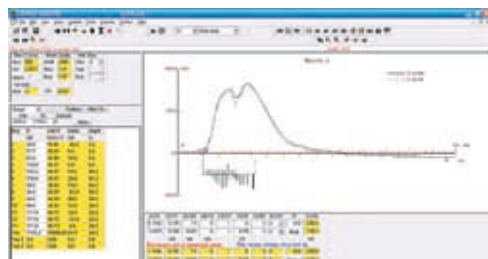
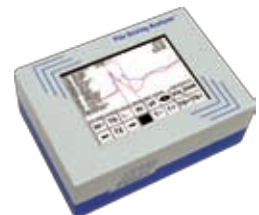
Pile Driving Analyzer (model PAX) is used to evaluate the bearing capacity and integrity of driven, drilled or cast in place piles by measuring acceleration and force during a hammer blow. In case of driven piles the data that can also provide information about the hammer efficiency and stresses in the pile.

### Pile Integrity Tester (PIT-collector)

Assesses the integrity of piles and shafts by the pulse echo (low strain) method.

### Acoustic Concrete Tester (ACT)

ACT is used to examine the thickness of concrete foundation (eg slabs and tunnel walls).

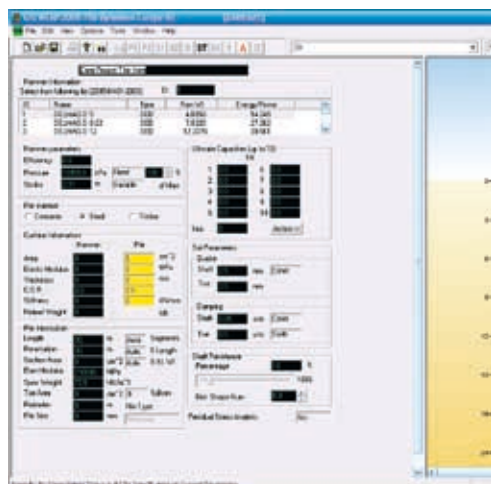


### Case Pile Wave Analysis Program (CAPWAP)

CAPWAP is a program that calculates the distribution of bearing capacity along the skin and toe, and simulates a static test load.

### GRL Wave Equation Analysis Program (GRLWEAP)

GRLWEAP is a one-dimensional Wave Equation Analysis program that simulates the pile response to pile driving equipment and predicts driving stresses, hammer performance and the relation between pile bearing capacity and net set per blow



### Contact:

**Pålanalys i Göteborg AB**  
**August Barks gata 13C**  
**S-421 32 Västra Frölunda**  
**SWEDEN**

**Web: [www.palanalys.se](http://www.palanalys.se)**  
**E-mail: [office@palanalys.se](mailto:office@palanalys.se)**  
**Phone: +46 (0)31-45 43 07**  
**Fax: +46 (0)31-45 99 80**

